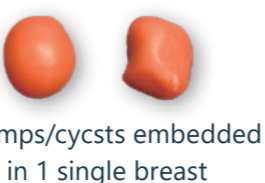


Breast Examination, Biopsy and Ablation Training Platform

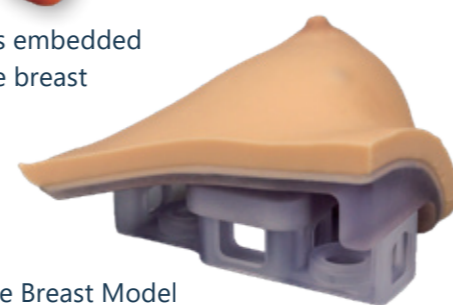
This platform offers realistic tactile feedback for practicing palpation, biopsy, cryoablation, and microwave ablation on breast models with embedded lumps and cysts. Its lifelike design enhances training precision, enabling healthcare professionals to refine diagnostic and interventional skills in breast care.



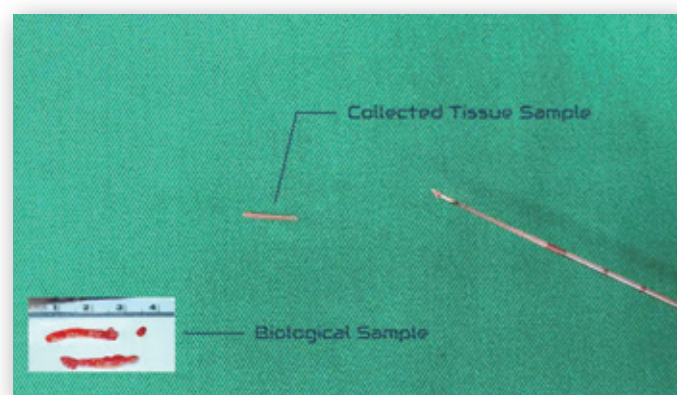
Full Model



5 lumps/cysts embedded in 1 single breast



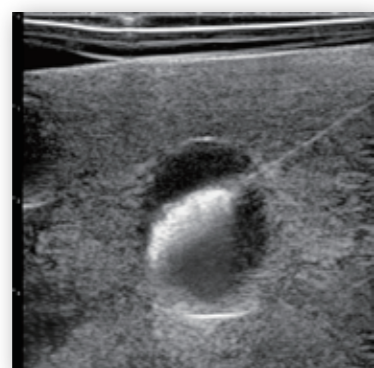
Single Breast Model



Training Demo - Biopsy



Training Demo - MWA



Training Demo - Cryoablation

Procedures

- Breast tumor microwave ablation (MWA).
- Breast tumor cryoablation
- Breast tumor core needle biopsy (CNB).
- Breast tumor fine needle aspiration (FNA).
- Breast tumor palpation.

Features

- Ultrasound compatible.
- Different types of lumps or cysts can be embedded for different training purposes.
- Embedded lumps are distributed randomly in various depths, from areola to chest wall.
- Different sizes of lumps are embedded, from 1.8 cm to 2.5 cm OD.
- Lumps can be pre-shaped as benign or malignant masses depending on training purposes.
- Modular design leads to cost-effective training.
- Realistic appearance provides trainees with more immersive experiences.
- The platform can be carried out using a portable case.

Specification

| Full Model | |
|------------------------------|-------------------------|
| Net Dimensions (L x W x H) | 42 cm x 35.5 cm x 15 cm |
| Net Weight | 3 kg |
| Gross Dimensions (L x W x H) | 56 cm x 40.5 cm x 32 cm |
| Gross Weight | 10 kg |

| Single Breast Model | |
|---------------------------|-----------------------|
| Net Dimension (L x W x H) | 16 cm x 21 cm x 11 cm |
| Net Weight | 1.1 kg |

Models

| Full Model | |
|---------------|--|
| BR-B01 | » Applicable for MWA, cryoablation, CNB and FNA (according to the types of lumps or cysts embedded in the breast assigned by the customer) » Includes portable case, platform base and 2 single breasts |

| Single Breast Model | |
|---------------------------------------|---|
| BR-B02 (Left) / BR-B03 (Right) | » Applicable for MWA, cryoablation and CNB » Includes single breast (BR-S01/BR-S02) and single breast support base (BR-S07/BR-S08) |

| | |
|---------------------------------------|---|
| BR-B06 (Left) / BR-B07 (Right) | » Applicable for FNA » Includes single breast (BR-S05/BR-S06) and single breast support base (BR-S07/BR-S08) |
|---------------------------------------|---|

Spare Parts

| | |
|---------------------------------------|---|
| BR-S01 (Left) / BR-S02 (Right) | Single breast with 5 lumps embedded for MWA, cryoablation and CNB |
| BR-S05 (Left) / BR-S06 (Right) | Single breast with 5 cysts embedded for FNA |
| BR-S07 (Left) / BR-S08 (Right) | Single breast support base |